



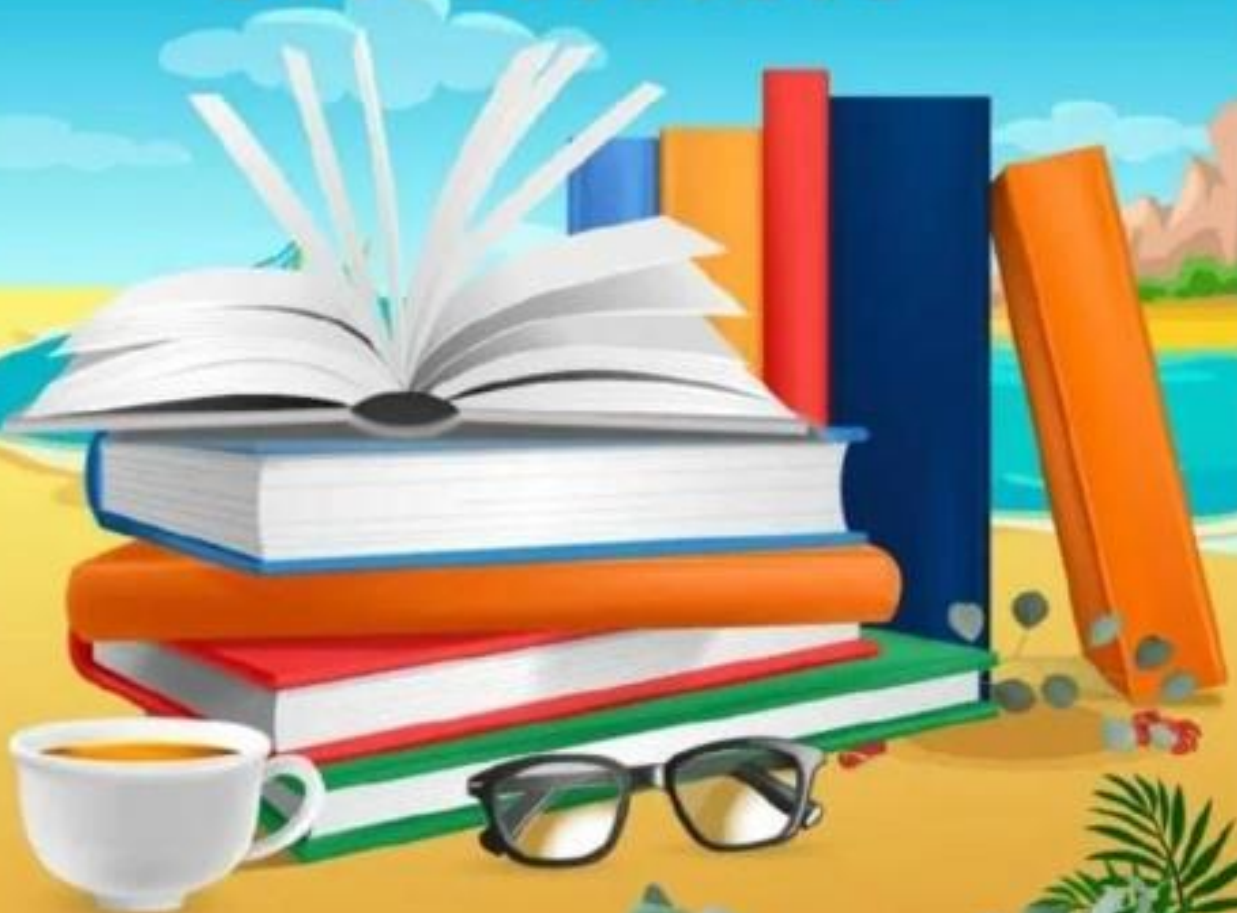
HERITAGE CHILDREN ACADEMY

(Senior Secondary School Affiliated to CBSE, New Delhi)

NH-24, Jalif Nagla, Teh- Milak, Distt. Rampur (U.P) 244701

CLASS: VII

Summer
Holiday
Homework



HERITAGE CHILDREN ACADEMY

(Senior Secondary School Affiliated to CBSE, New Delhi)
NH-24, Jalif Nagla, Teh-Milak, Distt. Rampur (U.P.)

SUMMER VACATION (SESSION 2024-25)

The Summer holidays are here again!!

During the scorching afternoons, beat the heat by staying indoors and doing indoor fun activities, read books, watch movies, grow plants, play games, do yoga, meditation and spend time to accomplish your Holiday Assignment.

Please note the following:

- 1) The school will remain closed for the summer vacation from **Wednesday, May 29,2024 to Sunday, June 30,2024.**
- 2) School will reopen from **Monday, July 01,2024.**

General Instructions to be followed:

- 1) Follow the instructions given by your teacher to complete the assignment.
- 2) Completion of Holiday H.W. is mandatory for all.
- 3) Holiday H.W. will be assessed for "Internal Assessment".
- 4) Complete your assignment by keeping the 'Rubrics' in mind.
- 5) Parents can be facilitator but work should be done by child in his/her own handwriting.
- 6) Kindly submit the holiday assignment from 25 June to 27 June between 08:00 AM – 10:00 AM

HAVE AN AWESOME SUMMER AND FUN FILLED VACATION!!

For queries related to fee, new admission, transfer certificate documentation you may contact the following officials at their below mentioned WhatsApp numbers between 10 AM to 2 PM. (DEEPANSHU SHARMA:- 9759431635)



Theme Plastic and its harmful effects

ENGLISH

Draft a thoughtful provoking poster on the "harmful effects of plastic "on A-4 size sheet

Rubrics

- Content 4 M
- Expression 3 M
- Neatness 2 M
- Time 1 M

MATHS

The largest contributor to the plastic waste problem is single use plastic packaging designed for immediate disposal. So dear students we are giving you some data about the different plastic products using this data make a pie chart with different colours.

Name of products	Monomaterial films (e.g pallet wrap...)	Carrier bags (e.g grocery bags..)	Bottle (e.g water bottles ..)	Sachet and multilayer films(e.g Shampoo..)	House holds goods (e.g Pens, toys..)
Using Percentage	16	35	45	10	14

Material required: Chart paper ,Pencils,colours etc.

Rubrics:

- Creativity 04 M
- Topic understanding 02M
- Neatness 02 M
- Time management- 02M
- Total 10 M**

SCIENCE

Q. Write a short report on a survey of use of different kinds of plastic.

Q. Draw a poster on 5 R's

Material Required – Project file, colourful Ruled sheets, colours,Ruler, pens etc

Rubrics:-

Creativity/presentation	03M
Writing	02M
Topic Understanding	03M
Data collection/Survey	02M
Total marks=10marks	

Hindi-

वृक्षों की उपयोगिता बताते हुए वृक्षों के संरक्षण पर एक सुंदर विज्ञापन तैयार कीजिए।

अथवा

पक्षी पर्यावरण को कैसे संतुलित रखते हैं यह बताते हुए पर्यावरण एवं पक्षियों के संबंध का चित्र बनाइए।

रुब्रिक्स

- कार्य योजना 05
- विषय वस्तु ज्ञान 03
- स्वच्छता 02

SOCIAL SCIENCE

Q- Write about the harmful effects of using Plastic bags.

Q- On a world political map locate the countries where plastic bags are i) banned ii) Partially banned iii) Tax imposed iv) Not banned.

Material Required – Project file, colourful Ruled sheets, world political Map, colours, pens

Rubrics:-

- **Creativity/presentation** 05M
- **Writing** 02M
- **Knowledge** 03M

Total marks=10marks

DRAWING

- Prepare a Basket from newspaper
- Painting (as per choice) in frame
- Flower from coloured paper.